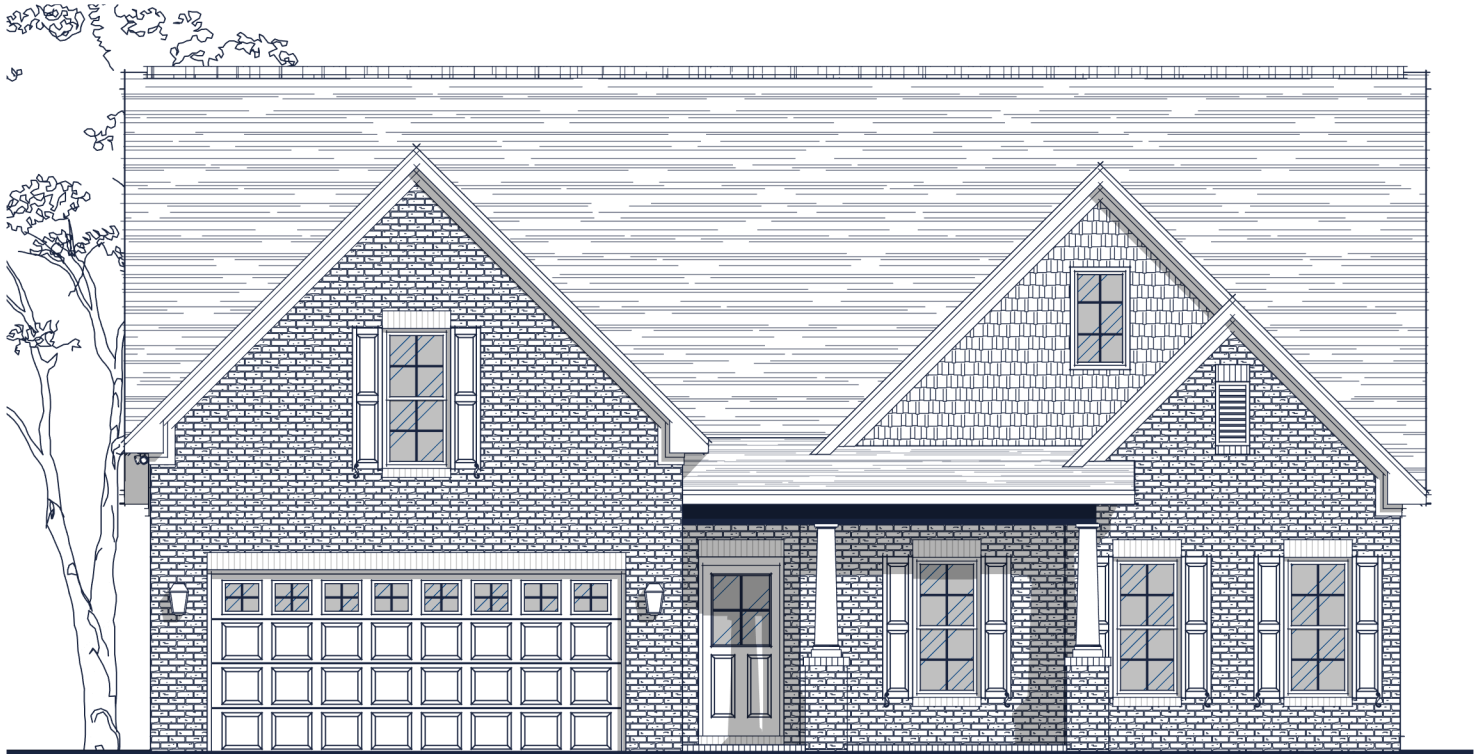




ISEN HOUR
HOMES

FLOOR PLAN: PENNY TRADITIONAL



Specs:

Bedrooms:	3
Bathrooms:	2-3
Square Footage:	2,311 Sq.Ft.
First Level:	1,870 Sq.Ft.
Second Level:	441 Sq.Ft.
Width:	48'-9"
Depth:	57'-5"

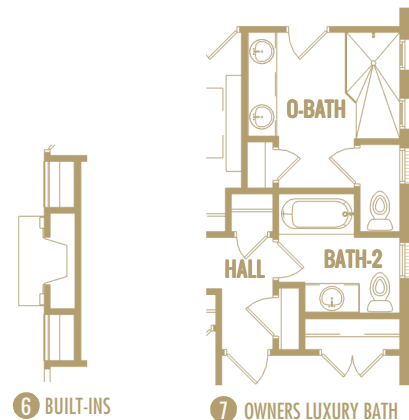
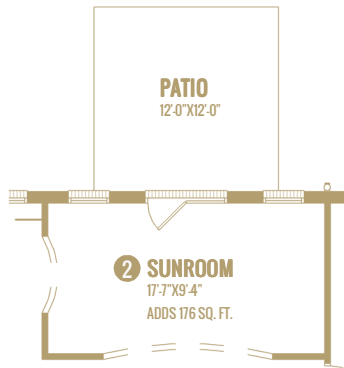
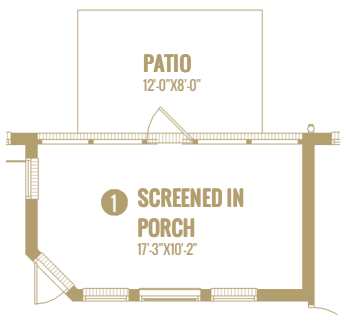
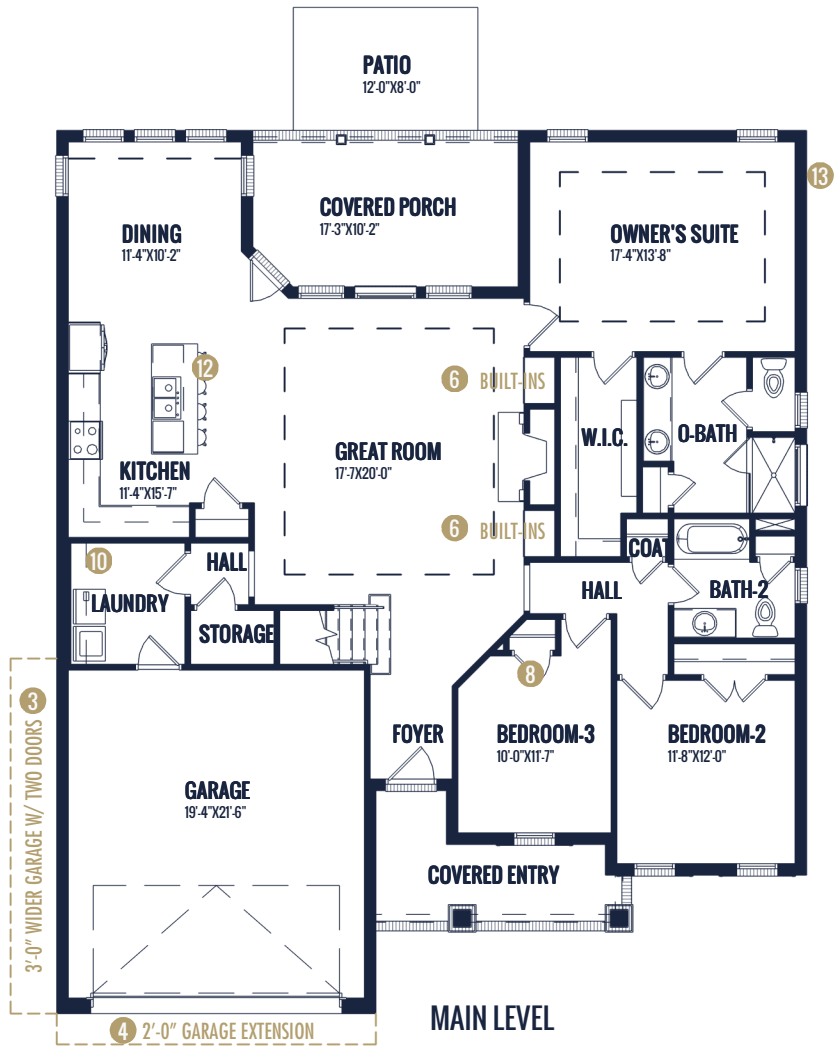
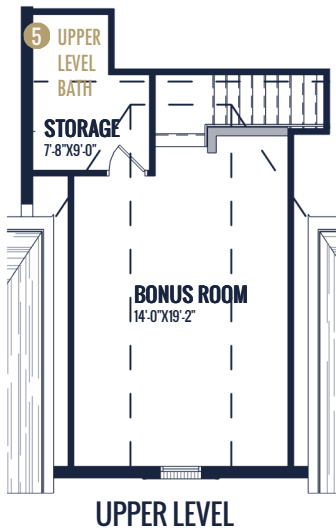
Options Shown:

- 1 Screened in Porch
- 2 Sunroom (Adds 176 Sq.Ft.)
- 3 3'-0" Wider Garage w/ Two Doors (Adds 60 Sq.Ft.)
- 4 2'-0" Garage Extension (Adds 30 Sq.Ft.)
- 5 Upper Level Bath
- 6 Built-ins
- 7 Owners Luxury Bath
- 8 Study
- 9 Coffered Ceiling
- 10 Laundry Sink w/ Cabinets
- 11 Patio Door at Owner's Suite
- 12 Cabinets at Backside of Island
- 13 Side View Window
- 14 Unfinished Storage

Watercolors, illustrations, and floor plans are for marketing purposes only and are subject to change at builder's discretion. Square footage is outside veneer and should be independently verified. This is not a legal document. 4/17/2023 10:40:42 AM



FLOOR PLAN: PENNY TRADITIONAL

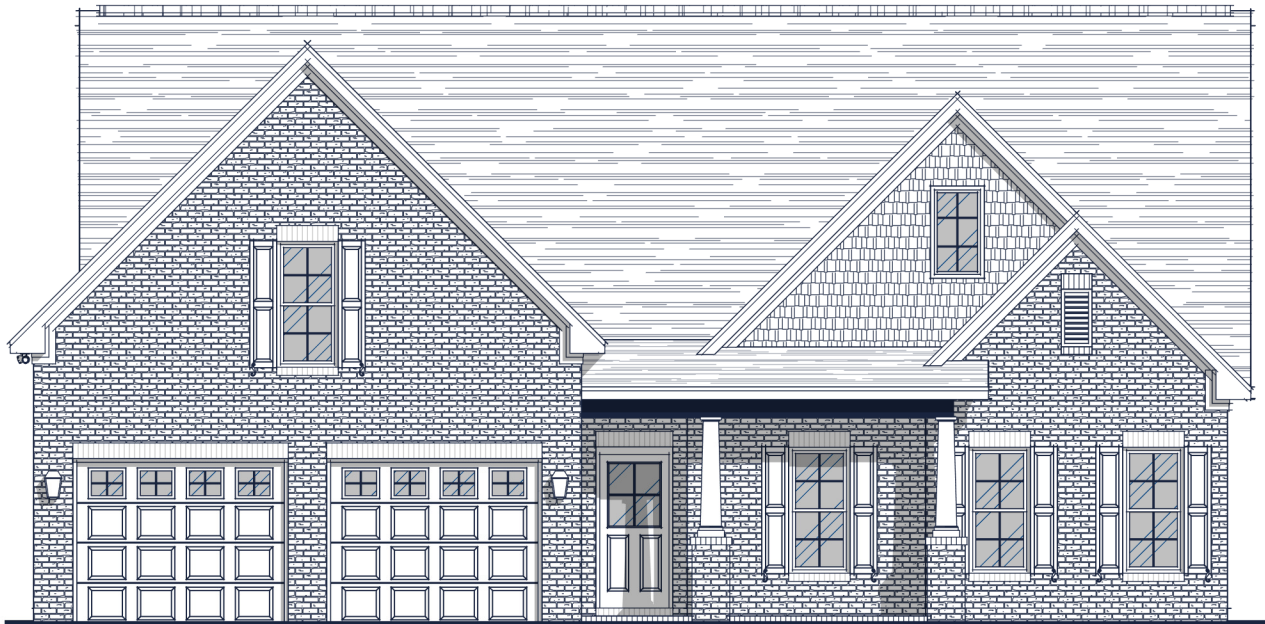
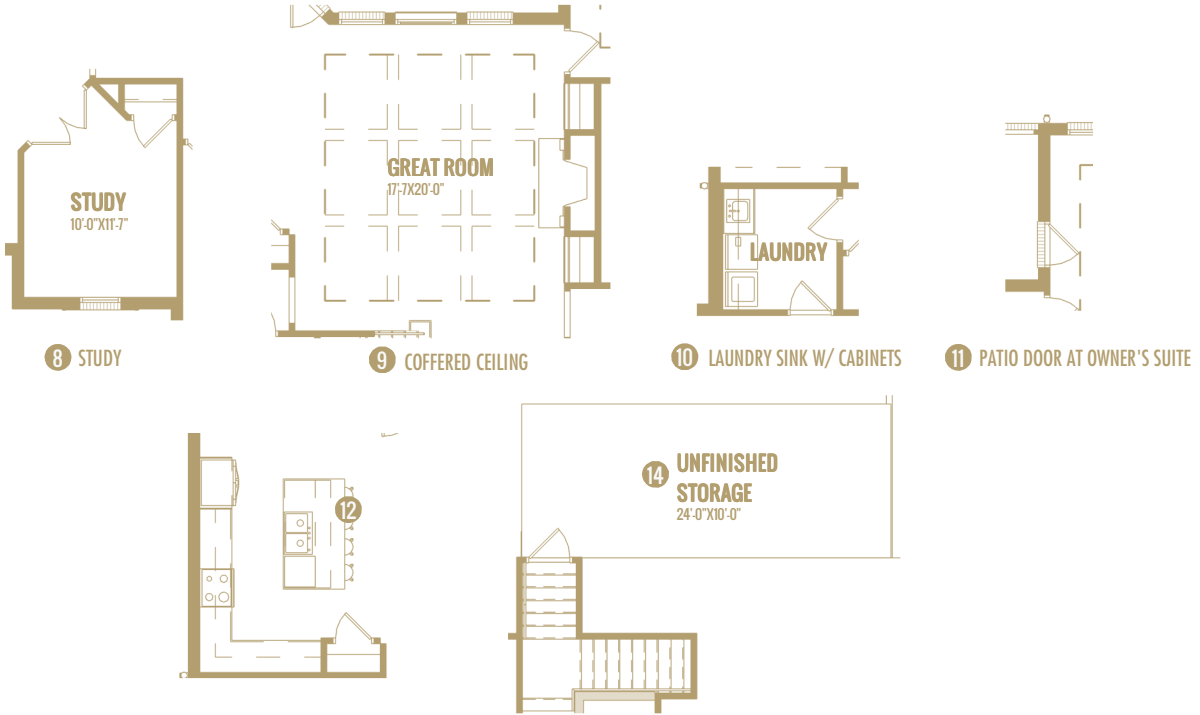


Watercolors, illustrations, and floor plans are for marketing purposes only and are subject to change at builder's discretion. Square footage is outside veneer and should be independently verified. This is not a legal document.
4/17/2023 10:41:17 AM



ISEN HOUR
HOMES

FLOOR PLAN: PENNY TRADITIONAL



3 3'-0" WIDER GARAGE W/ TWO DOORS
(Adds 60 Sq.Ft.)

Watercolors, illustrations, and floor plans are for marketing purposes only and are subject to change at builder's discretion. Square footage is outside veneer and should be independently verified. This is not a legal document.
4/17/2023 10:41:35 AM

